

CAREER PATHWAY

TECHNICIAN MEDICAL ELECTRONICS

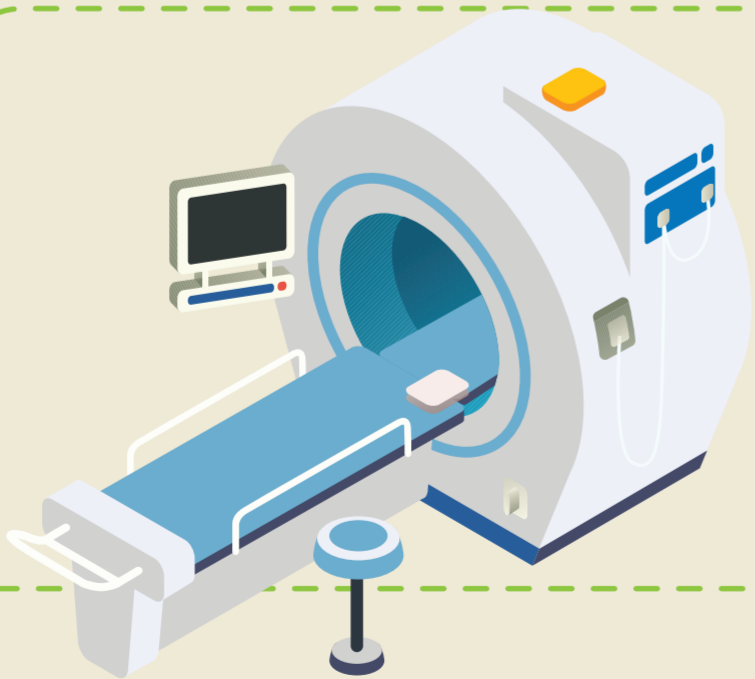


SKILLS TAUGHT IN ITI

- Install, service and maintain medical equipment and machines in hospitals
- Plan, estimate, assemble, install and test wiring systems in hospitals & CSSDs (Central Sterile Services Department)
- Knowledge of cardiac monitors, blood pressure monitors, and anesthesia equipment
- Operation, control and monitoring of medical machines and equipment
- Operate diagnostic medical equipment, life-saving equipment, and cardiac equipment
- Install, test and maintain a CCTV system and configure the system for surveillance
- Understand the role of the biomedical department

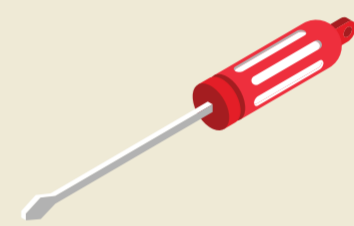
JOB OPPORTUNITIES AFTER ITI

- Production & manufacturing industries
- Government & private hospitals
- Health clinics in India & abroad
- Sales and service centers of biomedical equipment manufacturers like Wipro, General Electric (GE), Larsen & Toubro (L&T) & Philips Healthcare
- Self-employment (Opening service centres)



SKILLS NEEDED BY COMPANY

- Maintain and repair medical devices such as defibrillators, imaging devices, and patient monitors
- Specialization in radiology and other laboratory devices
- Knowledge of complex machine parts and tools including digital multimeter, calibration devices, and voltmeters



CAREER PATHS FOR THIS TRADE

ENTRY LEVEL

Technical Apprentice (electronics/biomedical/healthcare), Medical Equipment Repairer, Biomedical Equipment Technician

MIDLEVEL

Product Specialist, Technical Support Specialist, Field Service Engineer, Assistant Manager in the medical sector

SENIOR LEVEL

Senior Manager, Operational Head, Entrepreneur

UPSKILLING OPPORTUNITIES

- Diploma course in notified branches of engineering by lateral entry
- Apprenticeship (NAC Certificate)
- Crafts Instructor Training Scheme (CITS) to become an instructor in ITIs
- Advanced Diploma (vocational) courses under DGT